

Data Analytics: Next Steps (?)

Tom Rondeau

Prepared for ISART 2016

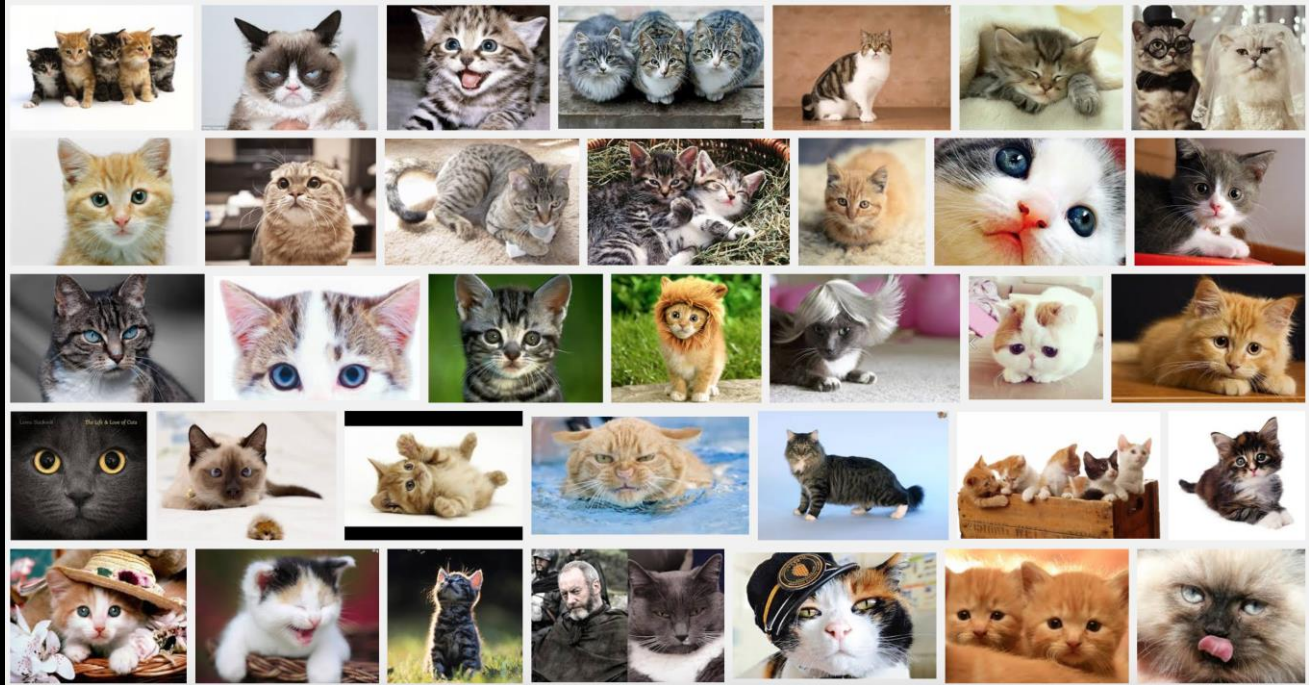
August 2016





$$P(X|Y) = \frac{P(Y|X)P(X)}{P(Y)}$$

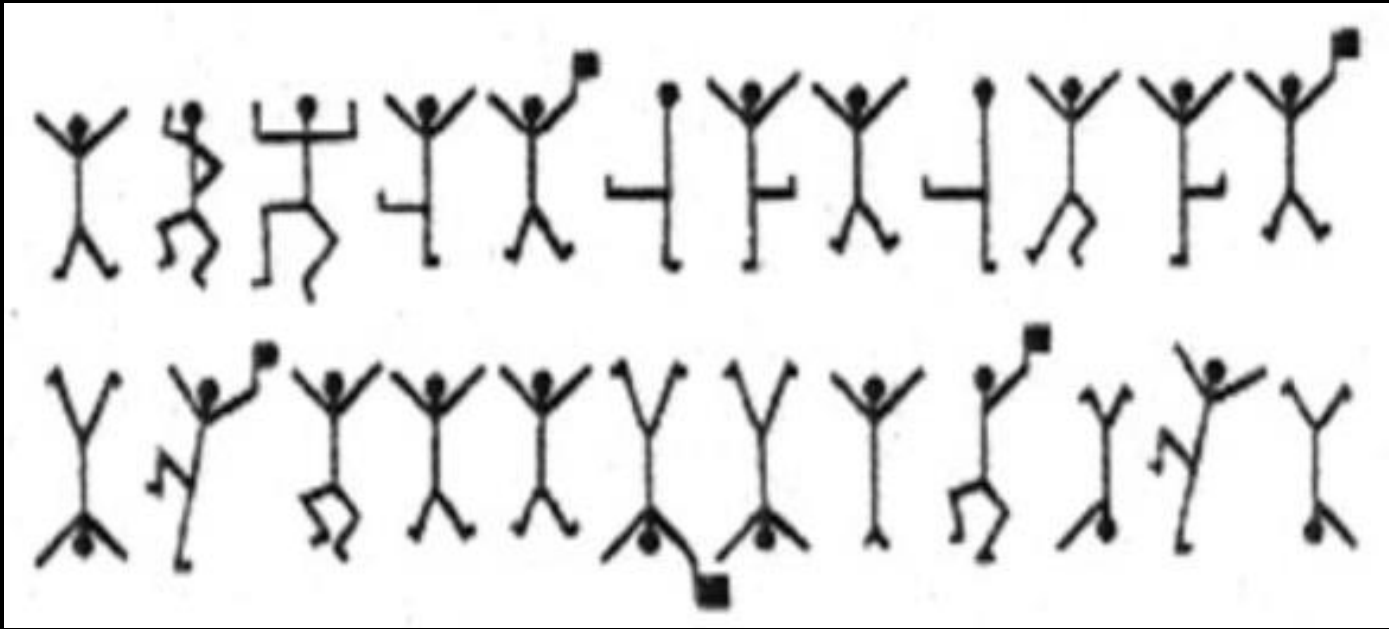
$Y \in$



X asks: "Is this a cat?"

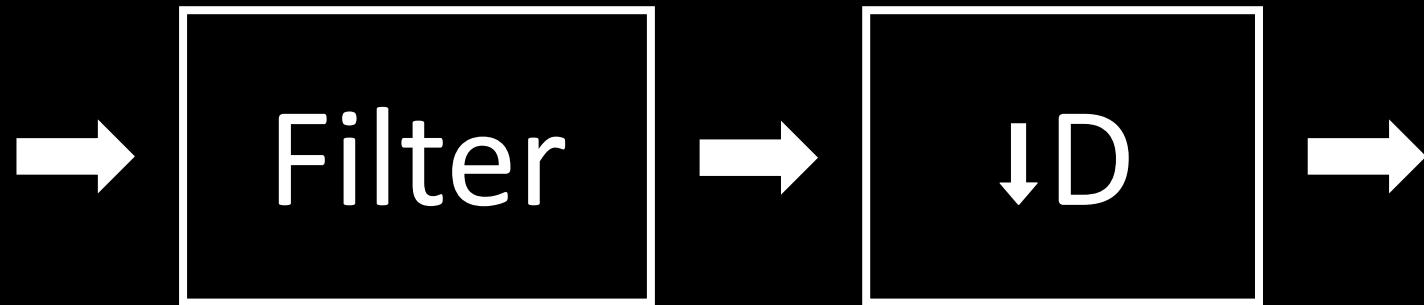


The Sherlock Holmes Problem



Do we know the right question to ask?

Lots of Ys → What is X?



$$f_s \geq 2B$$



www.darpa.mil